

New industrial gear units in 5 days or less

SEW Eurodrive has launched a rapid new service providing delivery of industrial gear units within five working days, or as fast as just one working day in the case of emergencies. The two new Assemble-To-Order services, are ATO5, for the five working day service, and ATO1 for the premium one day service. Both are available with SEW Eurodrive's tried and tested modular system of industrial gear units.

This includes the company's range of standard Generation X.e helical and bevel helical industrial gear units, up to 45kNm, and the standard P Series of planetary gear units up to 360kNm with almost all options. From March 2021 this will be expanded to include Generation X.e gear units up to 175kNm.

The new services will be of benefit to both design and maintenance engineers alike. Designers, for example, will benefit with more time for better planning, the ability to finish the design before placing an order, and faster project implementation.

Maintenance engineers will no longer need to store replacement units or components, reducing costs and the need for storage facilities. The new services will result in greater operational reliability too, as ATO1 units will leave SEW Eurodrive's plant just one working day after receiving an order, making it more like an extension of the customer's own warehouse.

In the event of machine downtime customers get access to this entire range of gear units 24 hours after placing an order. Not only does this provide reassurance and peace of mind, but flexibility and operational



reliability in an emergency situation. In fact, the UK division of SEW Eurodrive is the first in the world to ship a Generation X.e gear unit under the new ATO1 service. The order was received on a Monday, the gearbox was built on Tuesday and then delivered to the customer's site, in the UK, on Wednesday.

Typical applications that will benefit from the new services include heavy-duty equipment found in mining, quarrying, conveying, and cement plants, etc.

MORE INFORMATION: www.sew-eurodrive.co.uk

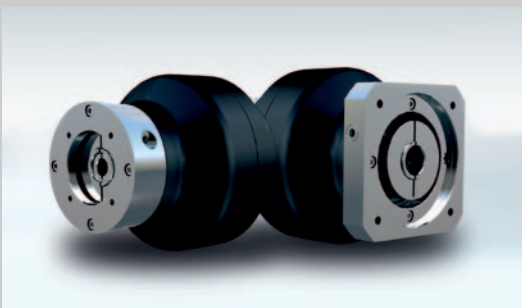
Cycloidal gears for SMEs are efficient and user-friendly

To remain competitive, small and mid-sized enterprises (SMEs) have no other choice but to rethink their machine concepts. Automation, flexibility and efficiency are the decisive issues here. Nabtesco, the world's biggest manufacturer of cycloidal gears, supports SMEs with user-friendly, flexible and economic automation solutions. The result: faster processes, higher productivity and lower costs.

Cycloidal gears use cams and rollers for power transmission. This ensures high efficiency, a long service life and extremely low backlash of less than one arcminute. In addition, their special design achieves excellent behaviour with respect to dynamics, load capacity and smooth operation. In particular, the servo gearboxes of the new Neco series provide for increased performance and efficiency.

They achieve high precision with a hysteresis loss of 0.5 arc.min and are extremely robust, due to double-bearing eccentric shafts and a bearing-mounted drive shaft. Motor shaft adaptation is achieved by means of a radial locking ring in a low-inertia version. This reduces the inertia of the motor shaft by up to 39 percent to enable extremely dynamic cycles. An economical solution for the highest standards. A flexible system with modular bushings and flanges guarantees easy adaptation of all standard servo motors.

MORE INFORMATION: www.nabtesco.de



FAULHABER Precision Gearheads

Expand your possibilities

The new family of planetary gearheads FAULHABER GPT. Move up a gear where others downshift.

faulhaber.com/GPT/en



Distributed exclusively in the UK by

EMS
www.ems-limited.co.uk

WE CREATE MOTION